

COUPLING SET HOUSE CONNECTION (SPINDLE SQUARE: 12MM)

MATERIAL: STAINLESS STEEL CAST IRON 1.4301

For extension spindles with rod square 25mm

Art.-No.: 4VKM12K25Z.5A2.VMS3

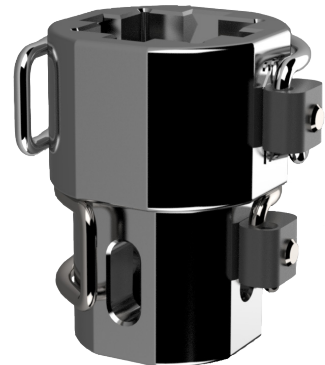
weight: 390g/Stk.

dimensions: 6,0cm x 6,5cm x 8,5cm (LxWxH)

Packing unit (pu): 10 pieces per box

weight: 3,90kg/pu

dimensions: 30,5cm x 13,5cm x 9,0cm (LxWxH)



Details

Coupling set consisting of the components:

1x coupling sleeve

- stainless steel cast iron 1.4301
- Delta Protect coated
- for extension spindles with rod square 25mm
- for house connection gate valves with conical spindle square 12mm
- packed in a plastic bag with label



Art.-No.: 3VKM12K25Z.5A2.000

weight: 180g

2x spring clip pin (scp)

- stainless steel spring clip
- stainless steel locking pin

1x scp extension spindl. - linkage-side

Art.-No.: 3VKST4834.25V36.A2

weight: 15g

1x scp gate valves - spindle-sided

Art.-No.: 3VKST4834.25V36.A2

weight: 15g



Subject to change without notice.

COUPLING SET HOUSE CONNECTION (SPINDLE SQUARE: 12MM)

MATERIAL: STAINLESS STEEL CAST IRON 1.4301

For extension spindles with rod square 25 mm

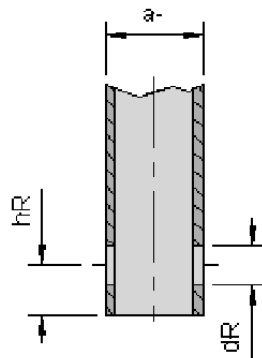
House connecting gate valves (HCG) tapping valves

House connection slider ≤ DN 50
ball valve ≤ DN 50

Dimensional specifications from :

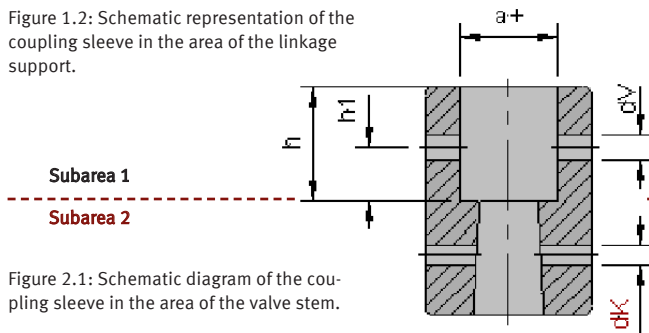
Technical rule **Worksheet DVGW GW 336-1 (A)** / September 2010. Extension Spindles - Part 1: Standardisation of interfaces between buried gate valve and extension spindles.

Figure 1.1: Schematic diagram of the outer square of the ES in the area of coupling receptacle.



External square of the installation set (rod square end of ES)			
measure	nominal dimension	lower tolerance	upper tolerance
external square (a-)	25 mm	-0,3	+0,7
bore position (hR)	10 mm	-0,2	+0,2
bore diameter (dR)	6 mm	0	+1,0

Figure 1.2: Schematic representation of the coupling sleeve in the area of the linkage support.



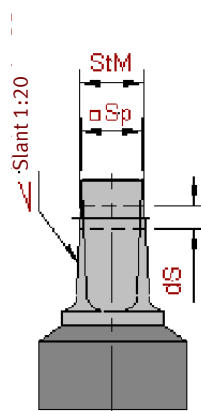
Inner square of coupling sleeve/gate valve			
measure	nominal dimension	lower tolerance	upper tolerance
inside square (a+)	25 mm	+0,8	+1,8
bore position (h ₁)	11 mm	-0,2	+0,2
bore diameter (d _v)	5 mm	0	+0,2
Insertion depth for operating rods (h)	20 mm	minimum-measure	

Figure 2.1: Schematic diagram of the coupling sleeve in the area of the valve stem.

Measure specifications:

Technical test basis **DVGW GW 336 (P)** / Oktober 2013. Water shut-off valves; requirements and tests.

Figure 2.2: Schematic diagram of the valve stem in the area of the coupling receptacle.



Joint between tapping valve and coupling sleeve (from the conical valve spindle □ to the conical inside □ of the coupling sleeve)	
construction	measure
spindle square (Sp □)	12,0 mm
inside micrometer (StM)	13,1 mm
bore coupling sleeve (d _K)	4,0 mm
bore spindle (d _S)	5,0 mm

Subject to change without notice.