

## COUPLING SET - NG SLIDER DN 250/350 (SPINDLE SQUARE: 27MM)

MATERIAL: STAINLESS STEEL CAST IRON 1.4301

For extension spindles with rod square 25mm

Art.-No.: 4VKM27K25Z.5A2.VMS3

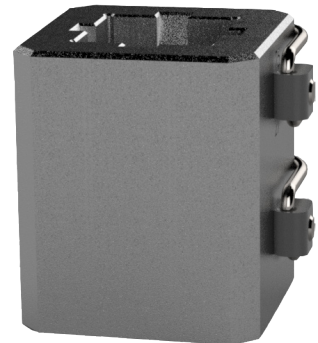
weight: 550g/pie.

dimensions: 6,0cm x 7,5cm x 6,0cm (LxWxH)

Packing unit (pu): 5 pieces per box

weight: 2,75kg/pu

dimensions: 34,5cm x 8,0cm x 6,5cm (LxWxH)

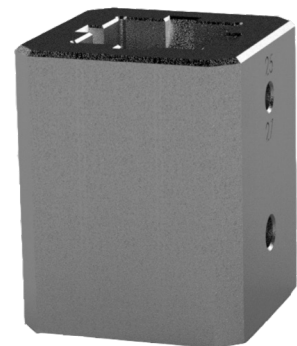


### Details

Coupling set consisting of the components:

#### 1x coupling sleeve

- stainless steel cast iron 1.4301
- Delta Protect coated
- for extension spindles with rod square 25mm
- for house connection gate valves with conical spindle square 17mm
- packed in a plastic bag with label



Art.-No.: 4VKM27K25Z.5A2.000

weight: 520g

#### 2x spring clip pin (scp)

- stainless steel spring clip
- stainless steel locking pin

Art.-No.: 3VKST4834.25V36.A2

weight: 15g



Subject to change without notice.

# COUPLING SET - NG SLIDER DN 250/350 (SPINDLE SQUARE: 27MM)

MATERIAL: STAINLESS STEEL CAST IRON 1.4301

For extension spindles with rod square 25 mm

## Network gate valves (NG)

slider DN 200 ≤ 350

Dimensional specifications from :

Technical rule **Worksheet DVGW GW 336-1 (A)** /

September 2010. Extension Spindles - Part 1: Standardisation of interfaces between buried gate valve and extension spindles.

Figure 1.1: Schematic diagram of the outer square of the ES in the area of coupling receptacle.

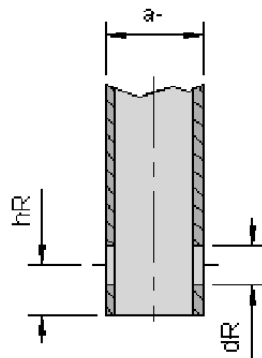


Figure 1.2: Schematic representation of the coupling sleeve in the area of the linkage support.

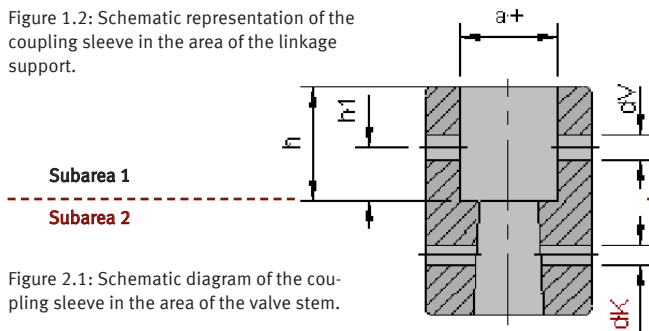


Figure 2.1: Schematic diagram of the coupling sleeve in the area of the valve stem.

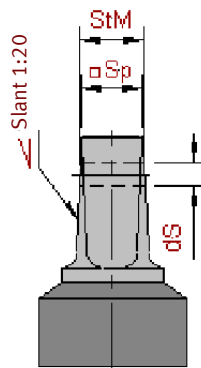


Figure 2.2: Schematic diagram of the valve stem in the area of the coupling receptacle.

### External square of the installation set (rod square end of ES)

measure	nominal dimension	lower tolerance	upper tolerance
external square (a-)	25 mm	-0,3	+0,7
bore position (hR)	10 mm	-0,2	+0,2
bore diameter (dR)	8 mm	0	+1,0

### Inner square of coupling sleeve/gate valver

measure	nominal dimension	lower tolerance	upper tolerance
inside square (a+)	25 mm	+0,8	+1,8
bore position (h <sub>1</sub> )	11 mm	-0,2	+0,2
bore diameter (d <sub>v</sub> )	5 mm	0	+0,2
Insertion depth for operating rods (h)	20 mm	minimum-measure	

### Measure specifications:

Technical test specification **DVGW GW 363 (P) / June 2010**. Shut-off valves, non-return valves, ventilation valves and control valves made of metal materials for drinking water supply systems - Requirements and tests.

### Joint between tapping valve and coupling sleeve (from the conical valve spindle □ to the conical inside □ of the coupling sleeve)

construction	measure
spindle square (Sp □)	27,0 mm
inside micrometer (StM)	28,9 mm
bore coupling sleeve (d <sub>K</sub> )	7,0 mm
bore spindle (d <sub>S</sub> )	8,0 mm

Subject to change without notice.