

COUPLING SET - NG SLIDER DN 250/350 (SPINDLE SQUARE: 27MM)

MATERIAL: STAINLESS STEEL CAST IRON 1.4301

For extension spindles with rod square 30mm

Art.-No.: 4VKM27K30Z.5A2.VMS3

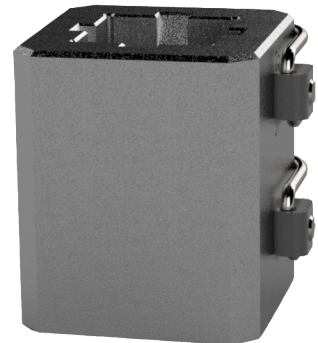
weight: 515g/pie.

dimensions: 6,0cm x 7,5cm x 6,0cm (LxWxH)

packing unit (pu): 5 pieces per box

weight: 2,58kg/VPE

dimensions: 34,5cm x 8,0cm x 6,5cm (LxWxH)

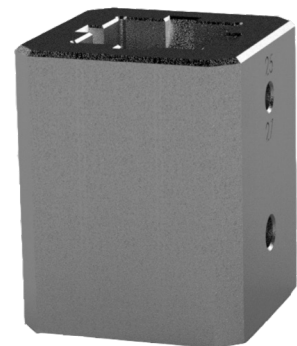


Details

Coupling set consisting of the components:

1x coupling sleeve

- stainless steel cast iron 1.4301
- Delta Protect coated
- for extension spindles with rod square 30mm
- for house connection gate valves with conical spindle square 27mm
- packed in a plastic bag with label



Art.-No.: 4VKM27K30Z.5A2.000

weight: 485g

2x spring clip pin (scp)

- stainless steel spring clip
- stainless steel locking pin

Art.-No.: 3VKST4846.25V46.A2

weight: 15g



Subject to change without notice.

COUPLING SET - NG SLIDER DN 250/350 (SPINDLE SQUARE: 27MM)

MATERIAL: STAINLESS STEEL CAST IRON 1.4301

For extension spindles with rod square 30 mm

Network gate valves (NG)

slider DN 200 ≤ 350

Dimensional specifications from :

Technical rule **Worksheet DVGW GW 336-1 (A)** /

September 2010. Extension Spindles - Part 1: Standardisation of interfaces between buried gate valve and extension spindles.

Figure 1.2: Schematic representation of the coupling sleeve in the area of the linkage support.

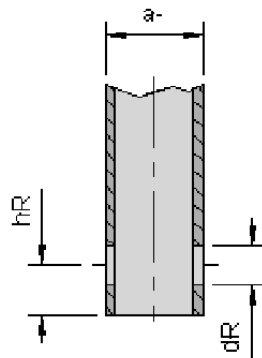


Figure 2.1: Schematic diagram of the coupling sleeve in the area of the valve stem.

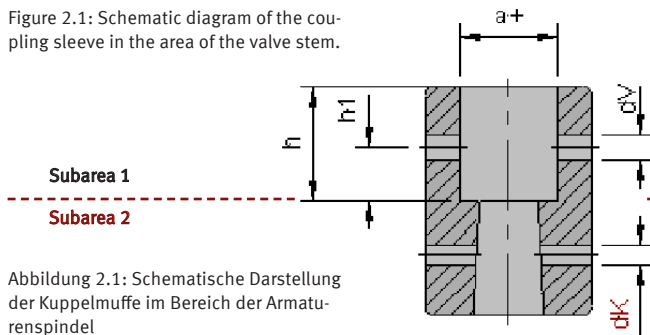
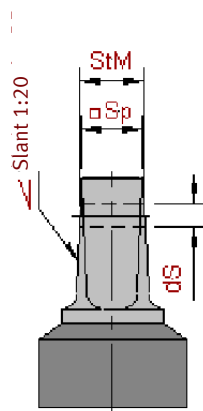


Abbildung 2.1: Schematische Darstellung der Kuppelmuffe im Bereich der Armaturenspindel

Figure 2.2: Schematic diagram of the valve stem in the area of the coupling receptacle.



External square of the installation set (rod square end of ES)			
measure	nominal dimension	lower tolerance	upper tolerance
external square (a-)	30 mm	-0,4	+0,8
bore position (hR)	10 mm	-0,2	+0,2
bore diameter (dR)	8 mm	0	+1,0

Inner square of coupling sleeve/gate valver			
measure	nominal dimension	lower tolerance	upper tolerance
inside square (a+)	30 mm	+0,9	+2,0
bore diameter (d _V)	11 mm	-0,2	+0,2
Bohrungs- durchmesser (d _V)	5 mm	0	+0,2
Insertion depth for operating rods (h)	20 mm	minimum-measure	

Measure specifications:

Technical test specification **DVGW GW 363 (P)** / June 2010. Shut-off valves, non-return valves, ventilation valves and control valves made of metal materials for drinking water supply systems - Requirements and tests.

Joint between tapping valve and coupling sleeve (from the conical valve spindle □ to the conical inside □ of the coupling sleeve)	
construction	measure
spindle square (Sp □)	27,0 mm
inside micrometer (StM)	28,9 mm
bore coupling sleeve (d _K)	7,0 mm
Bohrung Spindel (d _S)	8,0 mm

Subject to change without notice.