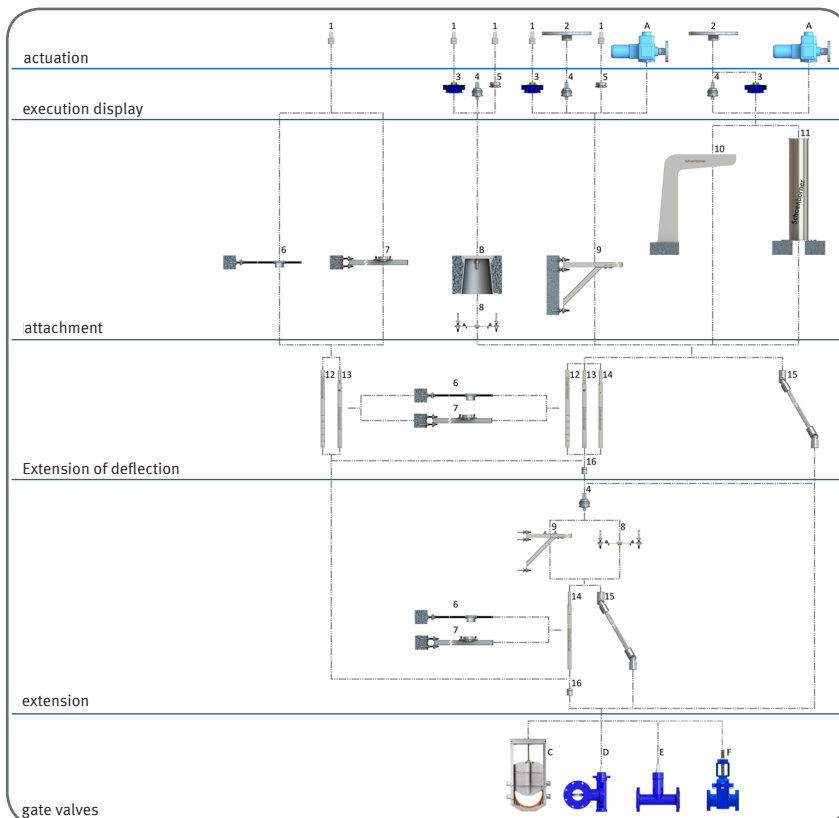


# SHAFT INSTALLATION MADE TO MEASURE

Below you will find an overview of our product components for shaft installation.

From the variety of these product features, you can put together a personalised solution to suit your requirements.

## OUR PRODUCT COMPONENTS



- A Rotary actuator
- B Street cap
- C Houseless fitting
- D Butterfly valve
- E Knife gate valve
- F Gate valve with rising spindle

- 1 square cap
- 2 Handwheel
- 3 Wheel pointer movement
- 4 Storage module
- 5 Rotary union
- 6 Wall bracket light
- 7 Wall bracket medium
- 8 Ceiling bracket
- 9 Wall bracket
- 10 Column stand cantilevered
- 11 Central column stand
- 12 Spindle extension rigid
- 13 Adjustable spindle extension
- 14 Spindle extension telescopic
- 15 Spindle extension angled
- 16 Coupling sleeve

All explanations for the listed product components can be found on the back.

booth 08/2018

**SCHÖNBORNER ARMATUREN GMBH**

Finsterwalder Chaussee 17a

03253 Doberlug-Kirchhain

[www.schoenborner.com/schachteinbau](http://www.schoenborner.com/schachteinbau)



## EXPLANATORY NOTES

### 1 square cap

- The square protector is the interface from the spindle extension to handwheel or to the control key C.

### 2 handwheel

- The handwheel size depends on the valve size, but can also be selected differently.

### 3 gear mechanism

- The gear indicator shows the current position of the valve.

### 4 warehouse module

- The bearing module absorbs radial and axial forces. Straight or angled rods can be connected.

### 5 rotary transmission

- The rotary union is an additional radial bearing for long rods.

### 6 wall bracket light

- The lightest version of the stabilization can be adjusted in 3 axes and serves to guide the spindle extension.

### 7 wall bracket medium

- The wall bracket, adjustable in 2 axes, serves to guide the spindle extension.

### 8 ceiling bracket

- The ceiling bracket offers the possibility of mounting the storage unit under a ceiling or a grating.

### 9 wall bracket

- The main function of the wall bracket is to accommodate the bearings.

### 10 Column stand cantilevered

- If the fitting is to be operated from the edge of the basin, the cantilevered column stand is best suited.

### 11 Central column stand

- If the fitting is located in a room or shaft with a ceiling, the corridor column is positioned centrally.

### 12 Spindle extension rigid

- Rigid spindle extensions are shortened by the customer. Drill holes and cutting marks facilitate the adjustment.

### 13 Spindle extension adjustable

- With the adjustable spindle extension a stepwise length adjustment is possible.

### 14 Spindle extension telescopic

- The telescopic spindle extension can be infinitely adjusted to the required length without tools.

### 15 Spindle extension angled

- The shaft joints optimally compensate for lateral distances. The height is adjusted by infinitely telescopic rods.

### 16 coupling sleeve

- The coupling sleeve connects the stem extension to the valve.

**You can also use our shaft linkage configurator to combine various shaft installation components. Simply go to [www.schoenborner.com/konfigurator](http://www.schoenborner.com/konfigurator) and call it up.**

If you have any questions or require additional information, please contact the person listed below. We will be happy to advise you.

This product sheet is part of the Schoenborner product catalogue. If you would like to place your collected forms in a Schoenborner folder, simply send us an e-mail with your contact details:

**[info@schoenborner.com](mailto:info@schoenborner.com)**

We will gladly send you the free folder.

#### **Your contact person:**

Mr. Marco Marschner

Tel.: 035322 5110-27

E-Mail: [Marco.Marschner@schoenborner.com](mailto:Marco.Marschner@schoenborner.com)