

COUPLING SET HOUSE CONNECTION (SPINDLE SQUARE: 10MM)

MATERIAL: DUCTILE CAST IRON GGG-40

For extension spindles with rod square 20mm

Art.-No.: 4VKM10K20Z.5GG.VMS3

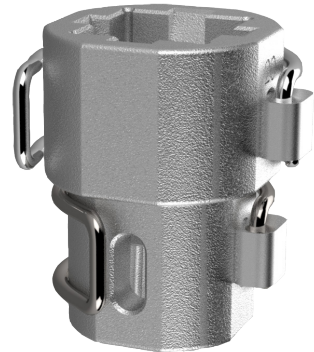
weight: 180g/pie.

dimensions: 6,0cm x 6,5cm x 8,5cm (LxWxH)

Packing unit (pu): 10 pieces per box

weight: 1,80kg/pu

dimensions: 30,5cm x 13,5cm x 9,0cm (LxWxH)



Details

Coupling set consisting of the components:

1x coupling sleeve

- ductile cast iron GGG-40
- Delta Protect coated
- for extension spindles with rod square 20mm
- for house connection gate valves with conical spindle square 10mm
- packed in a plastic bag with label



Art.-No.: 4VKM10K20Z.5GG.000

weight: 165g

1x spring clip pin (scp)

- stainless steel spring clip
- zinc locking pin

Art.-No.: 3VKST4834.2536

weight: 15g



Subject to change without notice.