

## COUPLING SET HOUSE CONNECTION (SPINDLE SQUARE: 12MM)

MATERIAL: DUCTILE CAST IRON GGG-40

For extension spindles with rod square 25mm

Art.-No.: 4VKM12K25Z.5GG.VMS3

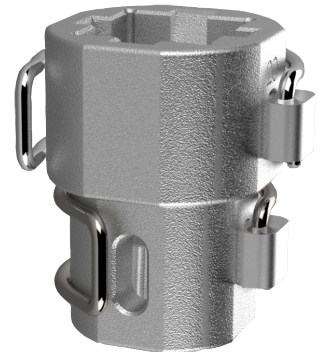
weight: 375g/pie.

dimensions: 6,0cm x 6,5cm x 8,5cm (LxWxH)

Packing unit (pu): 10 pieces per box

weight: 3,75kg/pu

dimensions: 30,5cm x 13,5cm x 9,0cm (LxWxH)



### Details

Coupling set consisting of the components:

#### 1x coupling sleeve

- ductile cast iron GGG-40
- Delta Protect coated
- for extension spindles with rod square 25mm
- for house connection gate valves with conical spindle square 12mm
- packed in a plastic bag with label



Art.-No.: 4VKM12K25Z.5GG.000

weight: 345g

#### 2x spring clip pin (scp)

- stainless steel spring clip
- zinc locking pin

1x scp extension spindl. - linkage-side **Art.-No.: 3VKST4834.25V36**  
weight: 15g

1x scp gate valves - spindle-sided **Art.-No.: 3VKST3834.25V36**  
weight: 15g



Subject to change without notice.