

COUPLING SET - NG SLIDER DN 100/150 (SPINDLE SQUARE: 19MM)

MATERIAL: DUCTILE CAST IRON GGG-40

For extension spindles with rod square 25mm

Art.-No.: 4VKM19K25Z.5GG.VMS3

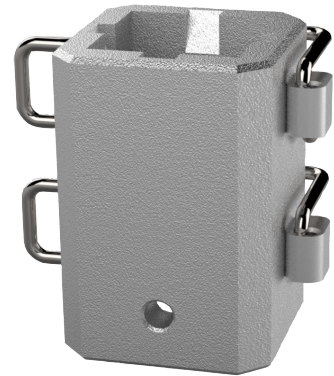
weight: 320g/piec.

dimensions: 6,0cm x 6,5cm x 8,5cm (LxWxH)

Packing unit (pu): 10 pieces per box

weight: 3,20 kg/pu

dimensions: 30,5cm x 13,5cm x 9,0cm (LxWxH)

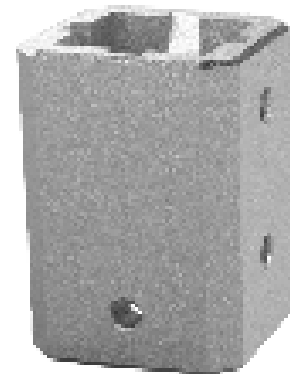


Details

Coupling set consisting of the components:

1x coupling sleeve

- ductile cast iron GGG-40
- Delta Protect coated
- for extension spindles with rod square 25mm
- for house connection gate valves with conical spindle square 19mm
- packed in a plastic bag with label



Art.-No.: 4VKM19K25Z.5GG.000

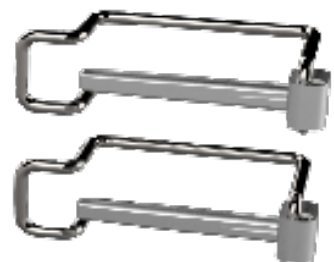
weight: 290g

2x spring clip pin (scp)

- stainless steel spring clip
- zinc steel locking pin

Art.-No.: 3VKST4834.25V36

weight: 15g



Subject to change without notice.